



Who we are

CMA Repair LLC is an associated company of Chiba Marine Yokohama Co. Ltd and Chiba Marine Korea Co., Ltd.

CMA Repair LLC originated from its roots in Japan. CMA lives the Japanese tradition built on trust, quality, and excellence. CMA's founding pillars are Trust, Quality, Fair pricing, and Customer Satisfaction. We understand the shipping business where expenses in off-hire and loss of hire cost dearly. Hence, we optimize our repairs to minimize the costs to our customers.



Contact Us

CMA Repair LLC

6701 Dixie Dr, Houston, TX 77087, USA

Tel: +1 713 993 6249

E-mail: cma@chibarepair.com | service@chibarepair.com

Vice President: PIC: Sukhpal Buttar | Cell: +1 251 599 0738

General Manager: PIC: Kayden Kim | Cell: +1 214 738 7328

Project Manager: PIC: Zuriel Maldonado | Cell: +1 713 927 2035

<https://cmarepairllc.com>



CMA Repair LLC

The result-driven Marine Repair Company



Table of Contents

About us 4

Heritage..... 2

Our commitment to service 6

Pictures speak a thousand words.....7-13

Contact us.....14

Our customers17-20



About us

CMA Marine LLC



CMA Marine LLC was formed in the USA realizing the need of the industry to have a marine repair company led by experienced marine professionals and engineers who are truly passionate about solving problems of the ships and marine assets.

CMA is an associated company of Chiba Marine Yokohama Co. Ltd and Chiba Marine Korea Co., Ltd.

Expertise domains



- Engine repairs | Marine auxiliary repairs
- Deck machinery and hull repairs
- Afloat repairs | workshop reconditioning
- Voyage repairs | in-situ machining
- Hull structure and piping work
- Controls and automation repairs
- Replacement of machinery
- Installation support
- Spares supply
- Inspections and audits
- Layup and reactivation support



Heritage

CMA Repair LLC or commonly known as Chiba Marine originates from its roots in Japan and lives the Japanese tradition built on trust, quality, and excellence. CMA's founding pillars are Trust, Quality, Fair pricing, and Customer Satisfaction.

We live the "Omotenashi Spirit".

The "Omotenashi" refers to a philosophy of "selfless customer service". It means "anything to do with delivering a great Customer experience".

The result-driven marine service company....



We do not use emergency repair as an occasion to mark up our tariff. Our teams are available 24x7, even in countries like the US, where service providers often limit themselves to designated working hours.

Our company is operated by experienced marine Engineers who sailed as Chief Engineers and worked as technical Superintendents, some having decades of workshop experience and others specializes in each machinery segment. They have a wealth of knowledge in marine engineering.

CMA Repair LLC is registered with MAN B&W and Yanmar as a trusted service provider. The company engages certified and trained engineers. CMA employs class-certified welders for vessel structural repair and piping work.

We currently provide services to all ports in the USA.



Our commitment

Values



Fair dealing and fair pricing with all clients. Building a long-term partnership with our clients. Keeping the focus on delivering results.

Mission



Assist our clients in maximizing asset utilization and minimizing off-hires. Solving engineering problems for smooth vessel operation.

Living the "Omotenashi Spirit".

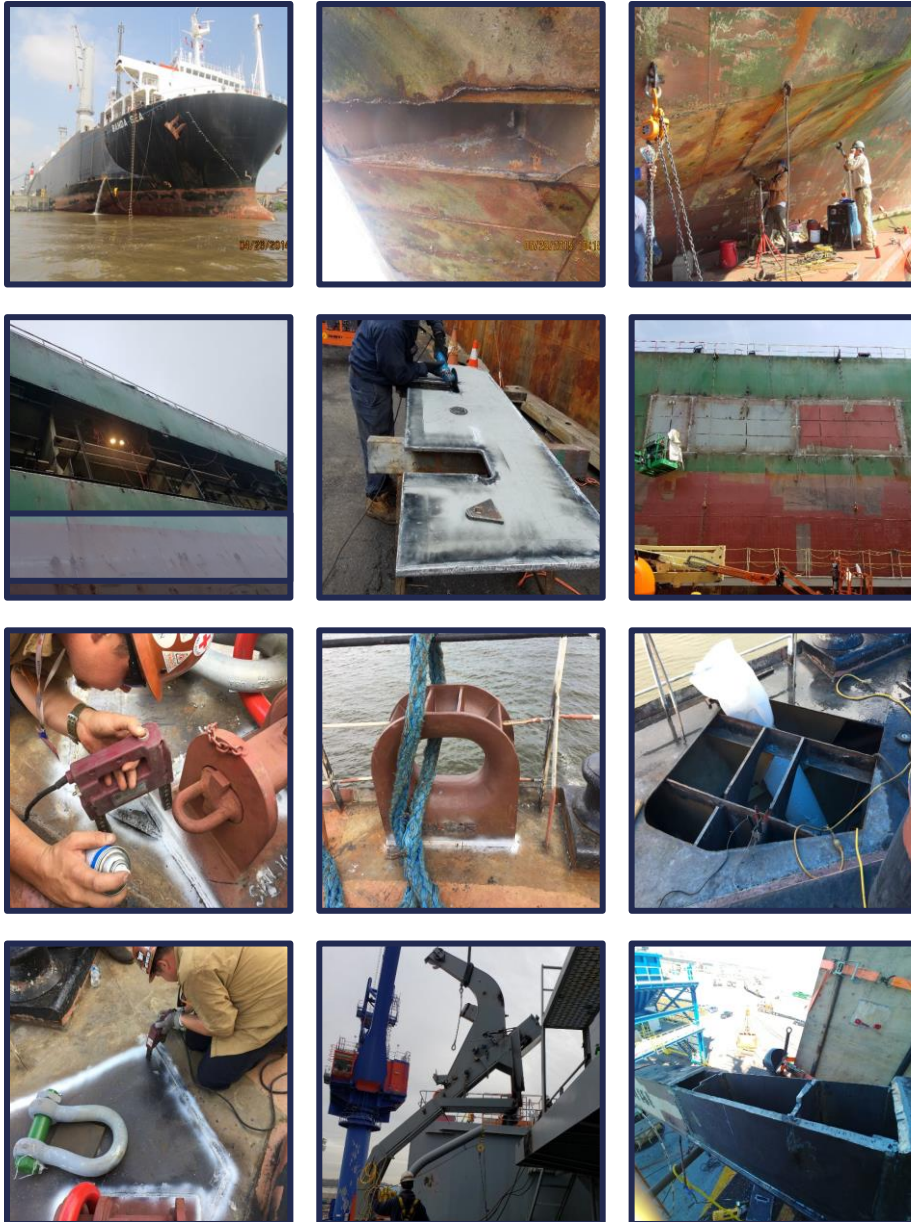
Vision



To be a trusted partner for ship maintenance requirements and cater service irrespective of the ship's location.



HULL AND DECK MACHINERY REPAIRS



HULL AND DECK MACHINERY REPAIRS

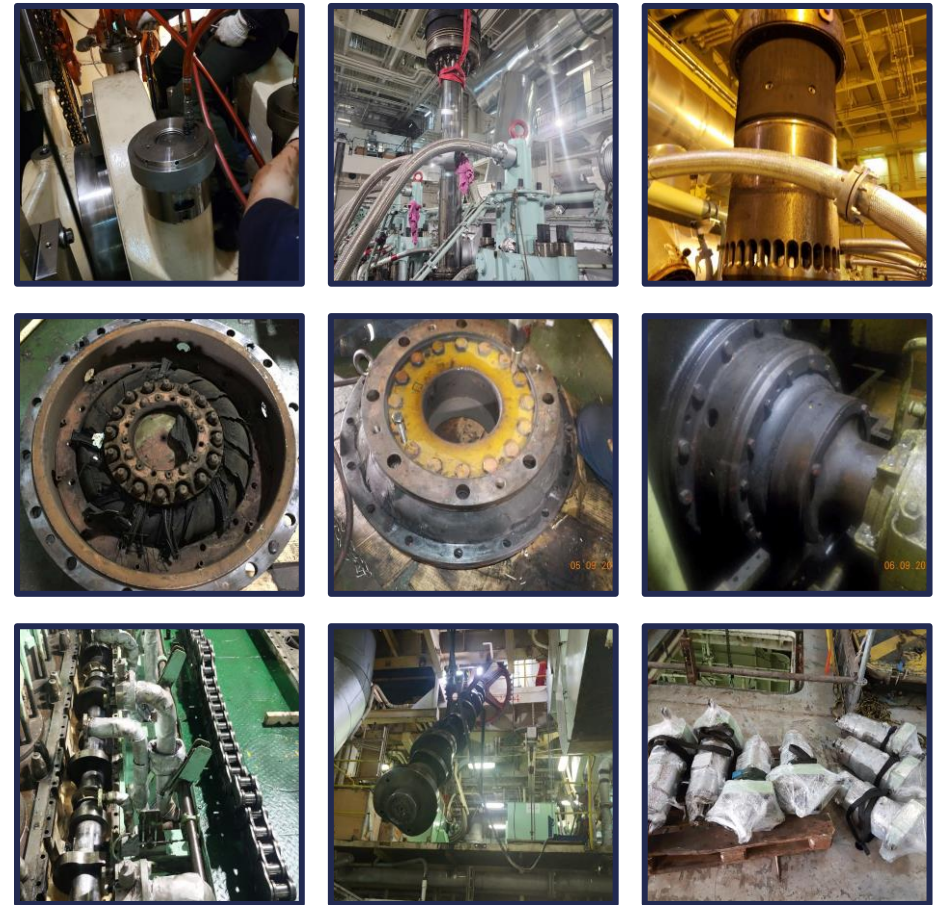




MAIN PROPULSION ENGINE REPAIRS



MAIN PROPULSION ENGINE REPAIRS





AUX ENGINE AND GENERATOR REPAIRS

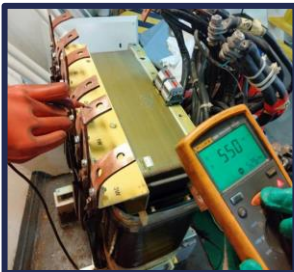
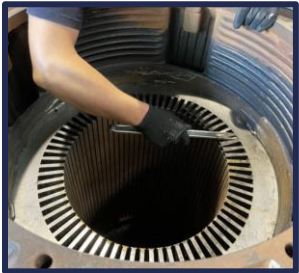


AUX MACHINERY AND PIPING REPAIRS





ELECTRICAL REPAIRS



CONTACT US!



CMA Repair LLC

6701 Dixie Dr.

Houston, TX 77087, USA

Phone: +1 713 993 6249

Cell: +1 214 738 7328

Cell: +1 251 599 0738

E-mail: cma@chibarepair.com

Email: service@chibarepair.com

Chiba Marine Korea Co., Ltd.

21-1, Gupyeong-Ro,

Saha-Gu, Busan, 49454, South Korea

Phone: +82-51-418-8998

Fax: +82-51-418-5880

E-mail: cmk@chibamarine.kr

Chiba Marine Yokohama Co., Ltd.

No. 4, Kamome-cho, Naka-ku

Yokohama, Japan 231-0813

Phone: + 81 45 621 5701

Fax: +81 45 621 8364

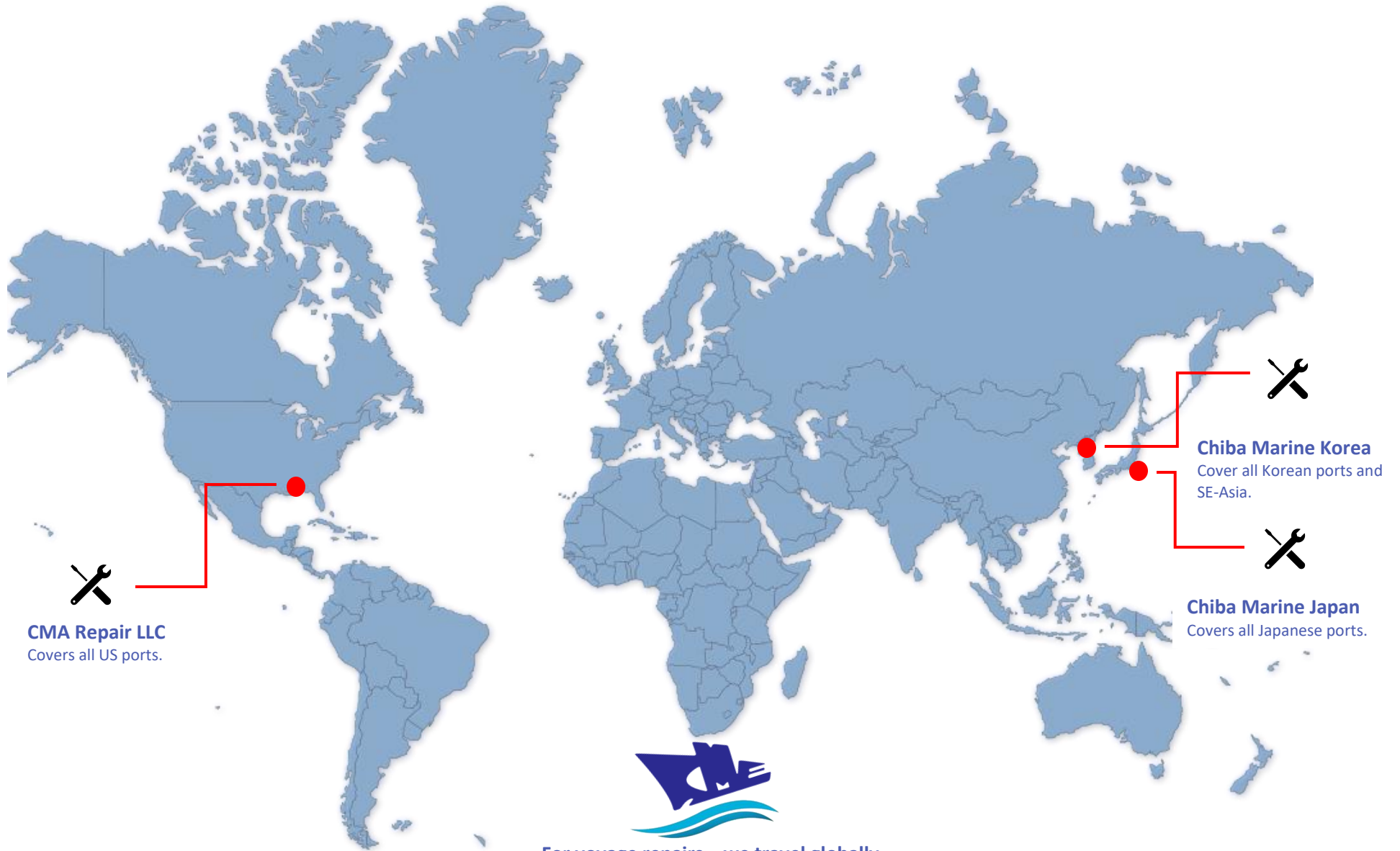
Email: cmy@chibamarine.jp

<https://cmarepairllc.com>





Chiba Marine Global Offices



For voyage repairs – we travel globally.



Our customers

"K" Line - Kawasaki Kisen Kaisha, Ltd.



Chevron Corporation



Cummins Inc.



International Shipholding Corp.



Maersk Line



Matson Inc.



Anglo-Eastern



Columbia Shipmanagement, Greece



Fleet Management Ltd.



M. T. M. Ship Management Pte Ltd.



MAN Diesel & Turbo (B&W)



MAN Diesel & Turbo

Mitsui O.S.K. Lines





Our customers

Navios Maritime Holdings Inc, Greece



NYK Line - Nippon Yusen Kabushiki Kaisha



Royal Caribbean Cruises



Synergy Marine Group



Wallem Group



NorthStar Ship Management



Northstar Ship Management Ltd

Pacific Basin Shipping Limited



Santoku Senpaku Co., Ltd

SANTOKU SENPAKU CO.,LTD.



Heart to Earth

VR Marine Management Pte. Ltd.



Yanmar Asia (Singapore) Corporation Pte Ltd

